






23 Crusher Park Drive Nambour QLD

2  2  4 

Located in a convenient spot on the north side of town, this charming and rustic 1950's postwar home, which has been beautifully styled, offers a lot of character and warmth on 809m2.

Upstairs, you'll find two spacious bedrooms and a large sleepout. There's VJ walls and polished floors throughout; the kitchen is country-style and features gas cooktop, electric oven and dishwasher. There's also a cozy living and dining area, as well as office, and main bathroom. The master bedroom adjoins a contemporary ensuite. There's a peaceful front patio to catch the afternoon sun, and a brilliant large deck for entertaining or relaxing.

Downstairs is the double carport, workshop area and laundry with additional bathroom and toilet facilities. There's also two car spaces for additional parking, and a

Price : \$ 673,000
Land Size : 809 sqm
View : <https://www.keylinerealty.com/sale/qld/sunshine-coast/nambour/residential/house/8072663>



Andrew Hicks
07 5441 2511



Mark Dunlop
07 5441 2511

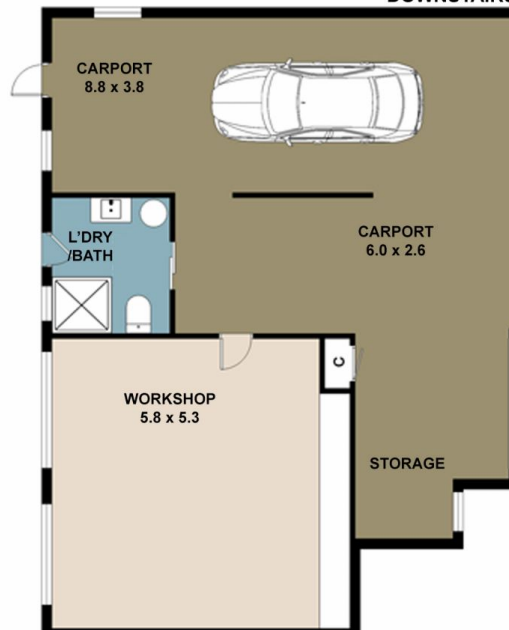


23 Crusher Park Drive
Nambour

UPSTAIRS



DOWNSTAIRS



This floor/site plan is conceptual only, it is provided for illustrative purposes and should not be relied upon. We make no guarantee as to the accuracy of this plan, all interested parties should make and rely on their own enquiries in determining the accuracy and information contained on this floor/site plan.